



***HOME BOUND HEALTHCARE  
HOSPICE***

---

*Providing end of life care by empowering decisions and supporting choices*

***HOSPICE  
PROGRAM OVERVIEW***

**14216 McCarty Road**

**Lemont, IL 60439**

**Phone (630) 914-5140**

**Fax (630) 914-5148**

**[www.homeboundhealth.com](http://www.homeboundhealth.com)**

# ***HOME BOUND HEALTHCARE HOSPICE***

---

*Providing end of life care by empowering decisions and supporting choices*

Home Bound Healthcare became licensed as a home health agency in February of 2005 by two Registered Nurses who have more than 30 years nursing experience combined. Having worked in major hospital settings and long term care facilities for years, these nurses learned that the availability of healthcare choice was the foundation of quality care. Allowing patients to safely remain in their homes during episodes of illness that might otherwise force them into a hospital or nursing home was a critical healthcare need that Home Bound Healthcare has been meeting for many years.

Certified through the Community Health Accreditation Program (CHAP) and accredited by the Home Caregivers Accreditation of America, Home Bound Healthcare maintains the highest quality of home health care services. While meeting standards of excellence, Home Bound Healthcare has been recognized by Home Care Elite as one of the Top 500 Home Health Agencies in the country for four consecutive years – 2007, 2008, 2009 and 2010. Nearly 5000 patient cases have been managed since 2005 with overwhelming positive outcomes. Their satisfaction is Home Bound's driving force.

During these years of providing compassionate and quality home health services to communities throughout Illinois and Las Vegas, the owners of Home Bound Healthcare continued to explore the spectrum of healthcare options. Rooted in their belief that healthcare services and choices should be directed by the patient and their chosen physician, the owners of Home Bound Healthcare understood that the *philosophy* and *mission* of care chosen must be as diverse as the patient population served. Paramount to this selection is the option of Hospice care. As a result, Home Bound Healthcare Hospice was established.

The owners, in keeping with their tradition of assembling the most qualified team of healthcare professionals, have chosen a highly select group of professionals that uniquely understand the philosophy of hospice care. Home Bound's Hospice team has the experience and advanced training to go beyond the clinical aspect of end-of-life care and creatively work side-by-side with each client and the ones they love. They are committed to the belief that each end of life journey is unique and interweave that philosophy into every patient's course of care. The Home Bound Hospice team is dedicated to always listen carefully to each client and work endlessly to support their vision.

Home Bound Healthcare Hospice has successfully completed their licensure survey with no deficiencies and accredited by Accreditation Commission for Health Care(ACHC).

Thank you for considering Home Bound Healthcare Hospice as a partner in your journey.

## **OUR MISSION**

Home Bound Healthcare Hospice provides end-of-life care by empowering decisions and supporting choices, through creative, compassionate and dignified care.

Homebound Healthcare Hospice adheres to the philosophy that individuals and their families/friends, who are facing end-of-life or life-limiting illnesses, must have access to qualified and compassionate medical, spiritual, emotional, and ethical care that:

- Respects and supports their choices;
- Upholds their right to control and direct the course of their care in order to achieve the highest quality of life possible; and
- Maintains the individual's right to die with dignity in accordance with the patient's and family's definition and perception of dignity.

The Mission of Home Bound Healthcare Hospice is driven by the concept that the dying process is an integral part of the life cycle that significantly impacts not only the patient, but all members of the patient's family and friends.

In light of this understanding, Home Bound Healthcare hospice is committed to:

- Providing nursing, medical social work, spiritual counseling, bereavement and volunteer services to those individuals within its service community who are facing a life-limiting illness;
- Assuring that its services are supportive of patient and family choices;
- Supporting each patient's highest quality of life through symptom management, pain relief and emotional care to the greatest extent possible.

When a cure is no longer possible, Home Bound Healthcare Hospice recognizes that a peaceful and comfortable death is an essential goal and that intensive palliative care focusing on pain relief, comfort and enhanced quality of life within the framework of resident choice, is a desired goal for the terminally ill.



# HOME BOUND HEALTHCARE HOSPICE

PROVIDING END OF LIFE CARE BY EMPOWERING DECISIONS AND SUPPORTING CHOICES

PH: (630) 914-5140 FAX: (630) 914-5148 WWW.HOMEBOUNDHEALTH.COM

## COMPANY AT A GLANCE

### CONTACT INFO:

Home Bound Healthcare Hospice, LLC

14216 McCarthy Road

Lemont, IL 60439

Office: (630) 914-5140

Fax: (630) 914-5148

Website: [www.HomeBoundHealth.com](http://www.HomeBoundHealth.com)

### MANAGEMENT:

Administrator:

Helen Lacek, LNHA

[hlacek@homeboundhealth.com](mailto:hlacek@homeboundhealth.com)

Assistant Administrator:

Suzanne Blanchard, MSW

[sblanchard@homeboundhealth.com](mailto:sblanchard@homeboundhealth.com)

Director of Clinical Services:

Rhea Gaudiano, RN

[rhea@homeboundhealth.com](mailto:rhea@homeboundhealth.com)

Social Worker:

Brian Cooper

[bcooper@homeboundhealth.com](mailto:bcooper@homeboundhealth.com)

Marketing Director:

Shelby Bernhaut

[sbernhaut@homeboundhealth.com](mailto:sbernhaut@homeboundhealth.com)

Chaplain:

Daryce Hoff Nolan

[dhoffnolan@homeboundhealth.com](mailto:dhoffnolan@homeboundhealth.com)

Volunteer Coordinator:

Nancy Coughlin

[ncoughlin@homeboundhealth.com](mailto:ncoughlin@homeboundhealth.com)

### SERVICE AREA:

Counties: Cook, DuPage, Lake

### SERVICES:

Direct Services:

Nursing, Medical Social Work, Spiritual Counseling, Bereavement Counseling, Volunteer Services, Home Health Aide / Homemaker Services, Dietary Services, Caregiver Support and Counseling Services

Indirect Services:

Medical Supplies & Equipment, Drugs & Biologicals, Rehab Services, Short-term Inpatient / Acute Services, Physical Therapy, Occupational Therapy, Speech / Language Pathology

### PAYMENT:

Medicare

Medicaid

### HOURS OF OPERATION:

Monday - Friday:

9:00am - 5:00pm

After Hours:

24 hrs/day, 7 days/week, 365 days/year

### EMPLOYEE REQUIREMENTS:

Background Check, 2 References, Resume, Employment Application, Licenses (when applicable), Online License Look-Up / Registry Verification, Orientation by Agency, Ongoing In-Service Training

### LICENSES / ACCREDITATION:

Medicare Provider ID

Accreditation Commission for Healthcare (ACHC)

Better Business Bureau (BBB)

### AFFILIATIONS:

Association for Death Education & Counseling (ADEC)

National Association of Professional Geriatric Care Managers (NAPGCM)

National Association of Social Workers (NASW)

**Providing End of Life Care by  
Empowering Decisions and Supporting Choices**

## **OUR SERVICES**

Home Bound Healthcare services are delivered by a team of highly skilled professionals dedicated to provide quality patient care and family support.

Home Bound Healthcare Hospice has designated an interdisciplinary team which, in consultation with the patient's attending physician, prepares a written plan of care for each patient.

### Direct Services:

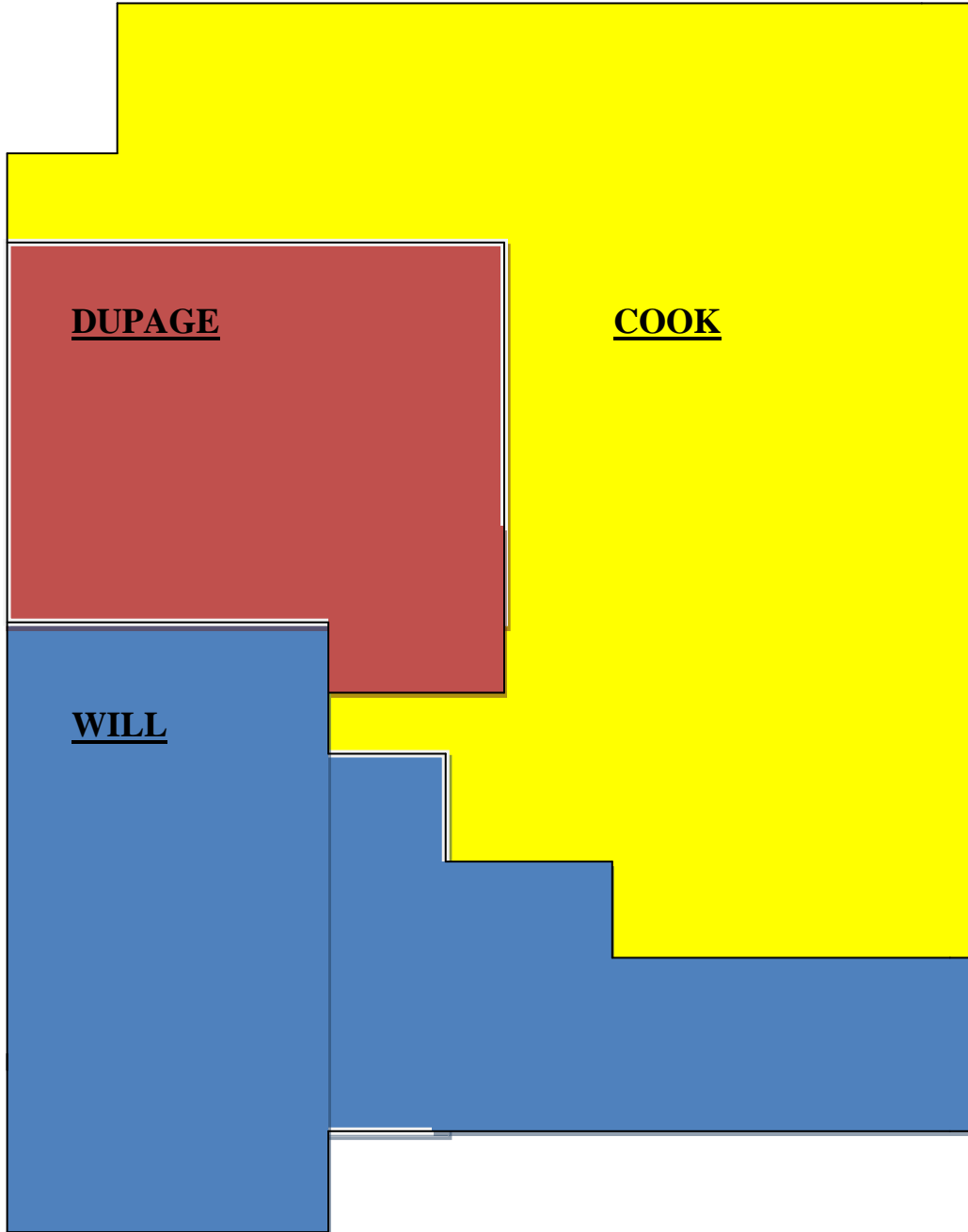
- Physician Services
- Nursing Services
- Medical Social Work Services
- Spiritual Counseling
- Bereavement Counseling
- Volunteer Services
- Home Health Aide and Homemaker Services
- Dietary Services
- Caregiver Support and Counseling Services

### Indirect Services:

- Medical appliances, supplies and equipment
- Drugs and Biologicals
- Short-Term inpatient / Respite Services
- Short-Term inpatient / Acute Services
- Physical Therapy Services
- Occupational Therapy Services
- Speech / Language Pathology Services

**OUR SERVICE AREA**

Home Bound Healthcare Hospice will serve the following geographic areas:





# HOME BOUND HEALTHCARE

[www.HOMEBOUNDHEALTH.com](http://www.HOMEBOUNDHEALTH.com)

## HOME HEALTH & PRIVATE DUTY SERVICES

1615 VOLLMER ROAD  
**FLOSSMOOR** IL 60422-1992  
TOLL FREE (800) 444-7028  
TEL (708) 798-0800  
FAX (708) 798-0870

3401 16TH STREET  
**MOLINE** IL 61265-6046  
TOLL FREE (866) 541-0900  
TEL (309) 762-7900  
FAX (309) 762-6909

2322 W. WILLOW KNOLLS RD  
**PEORIA** IL 61614-1307  
TOLL FREE (866) 725-0888  
TEL (309) 589-0888  
FAX (309) 589-0889

4231 PROGRESS BLVD SUITE 3  
**PERU** IL 61354-1193  
TOLL FREE (877) 220-8808  
TEL (815) 220-8808  
FAX (815) 220-8828

421 SOUTH GRAND AVE W SUITE 2B  
**SPRINGFIELD** IL 62704-3781  
TOLL FREE (877) 753-2210  
TEL (217) 753-2260  
FAX (217) 753-2270

1625 BETHANY ROAD  
**SYCAMORE** IL 60178-3124  
TOLL FREE (877) 895-9898  
TEL (815) 895-9898  
FAX (815) 895-3232

1350 SOUTH JONES BLVD SUITE 240  
**LAS VEGAS** NV 89146-1206  
TOLL FREE (866) 953-0888  
TEL (702) 433-0800  
FAX (702) 433-0801

## HOSPICE

14216 MCCARTHY ROAD  
**LEMONT** IL 60439-9393  
TEL (630) 914-5140  
FAX (630) 914-5148

## PRIVATE DUTY SERVICES

502 S MAIN STREET SUITE B  
**PRINCETON** IL 61356-2055  
TOLL FREE (877) 220-8808  
TEL (815) 879-8808  
FAX (815) 875-8828

## PRIVATE DUTY SERVICES & STAFFING

2307 WEST LAKE STREET 2ND FLR  
**MELROSE PARK** IL 60160-3622  
TOLL FREE (877) 338-2004  
TEL (708) 338-2500  
FAX (708) 338-2503

## CONSULTING

502 S MAIN STREET SUITE D  
**PRINCETON** IL 61356-2055  
TOLL FREE (877) 220-8808  
TEL (815) 875-8808  
FAX (815) 875-8828

## OUTPATIENT REHABILITATION

2930 MANNHEIM ROAD SUITE 1B  
**FRANKLIN PARK** IL 60131-2265  
TOLL FREE (800) 444-7028  
TEL (847) 228-1650  
FAX (847) 228-1660

## MEDICAL EQUIPMENT & SUPPLIES

2307 WEST LAKE STREET  
**MELROSE PARK** IL 60160-3622  
TOLL FREE (877) 615-0803  
TEL (708) 615-0800  
FAX (708) 615-0808